



# *Ebrary Electronic Books*

Ahmad Munawar Mohmad Anuar  
Open University Malaysia



TSDAS DIGITAL LIBRARY  
OPEN UNIVERSITY MALAYSIA

# Ebrary Intro.



- A collection of over 30,000 full text electronic books, covering a wide range of subject areas.
- OUM has been subscribing to Ebrary since July 2002
- Ebrary is one of OUM Database with our perpetual books.

# IPT with Ebrary



- Open University Malaysia
- University Malaya
- University Malaysia Pahang
- University Utara Malaysia
- Universiti Darul Iman
- Universiti Teknikal Malaysia Melaka (UTeM)

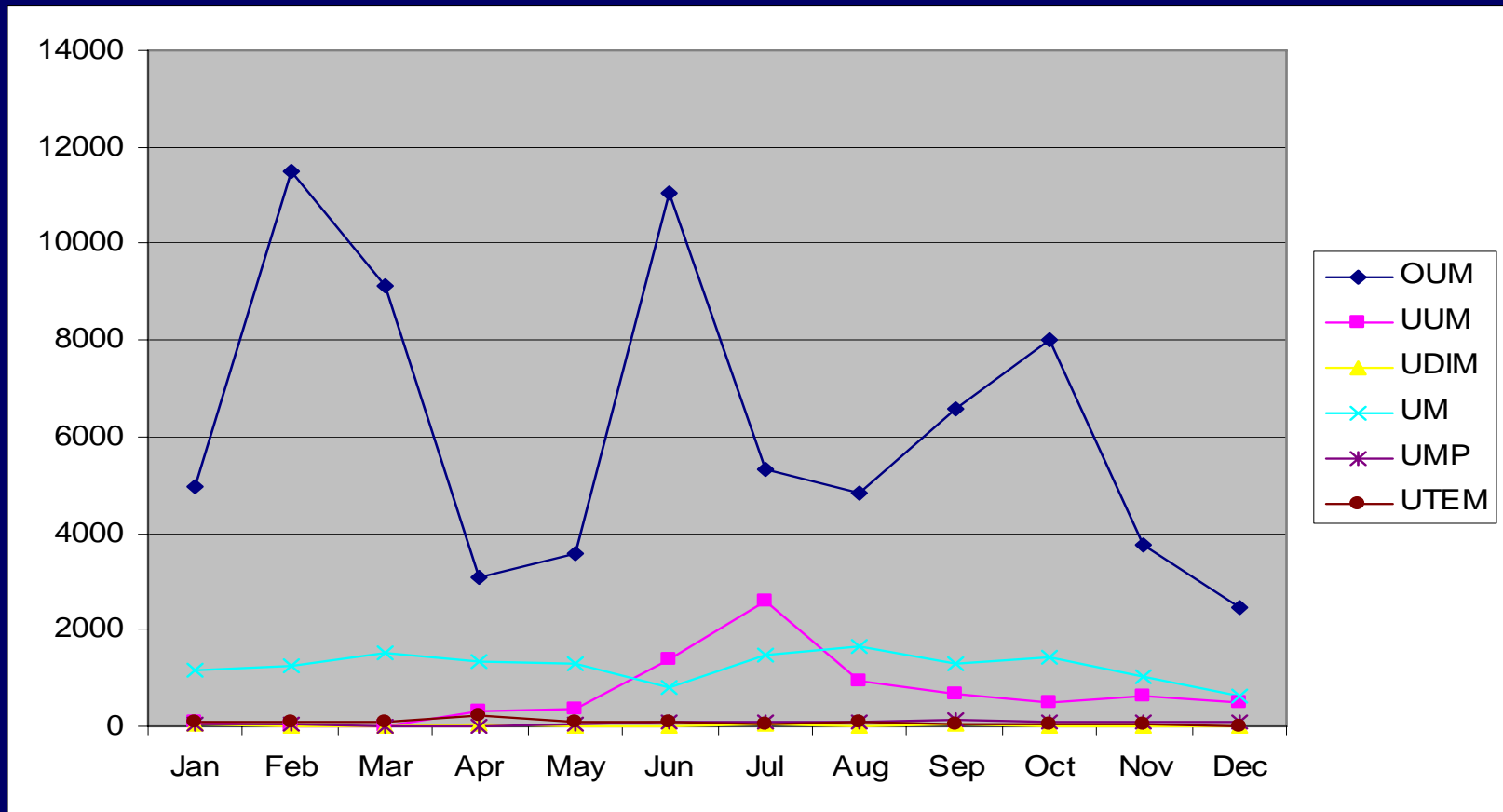


# Subscription Cost 2007

IPT	Subscription Cost 2007
OUM	RM
UM	RM
UDIM	RM
UTEM	RM
UMP	RM
UUM	RM



# Session





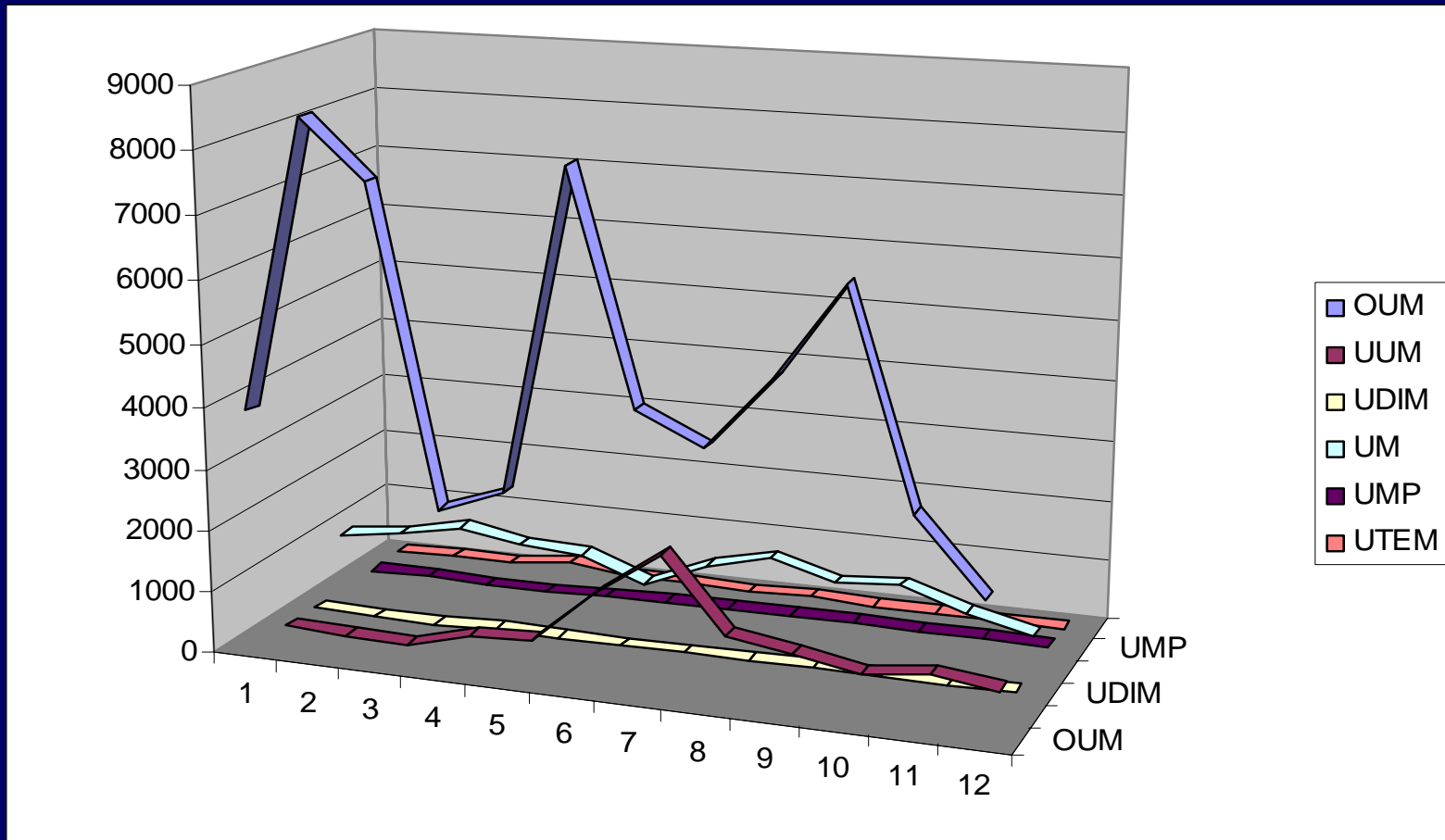
# Session

## Session

	OUM	UUM	UDIM	UM	UMP	UTEM
Jan	4965	88	36	1147	30	80
Feb	11511	12	2	1246	43	89
Mar	9115	5	1	1527	16	84
Apr	3069	319	47	1348	22	210
May	3594	370	7	1301	44	95
Jun	11026	1391	6	822	80	78
Jul	5310	2583	37	1486	83	53
Aug	4827	961	8	1652	109	83
Sep	6588	693	60	1315	114	38
Oct	8016	508	12	1433	71	41
Nov	3765	622	5	1011	90	34
Dec	2471	505	21	638	78	5



# Doc: Viewed





# Doc. Viewed

	OUM	UUM	UDIM	UM	UMP	UTEM
<b>Jan</b>	3909	69	29	981	25	65
<b>Feb</b>	8555	10	2	1096	35	72
<b>Mar</b>	7632	5	1	1318	11	76
<b>Apr</b>	2644	270	37	1140	14	188
<b>May</b>	3013	330	6	1082	37	81
<b>Jun</b>	8098	1217	6	709	71	61
<b>Jul</b>	4509	1960	24	1125	75	43
<b>Aug</b>	4027	784	6	1380	88	76
<b>Sep</b>	5176	596	47	1077	93	28
<b>Oct</b>	6652	427	10	1168	65	36
<b>Nov</b>	3349	557	4	817	79	15
<b>Dec</b>	2182	412	13	585	63	5



# Summary Data



Item	OUM	UM	UDIM	UTEM	UUM	UMP
Subscription Duration	1 Year	1 Year	1 Year	1 Year	1 Year	1 Year
Subscription Price						
User License	Unlimited	Unlimited	Unlimited	Unlimited	Unlimited	Unlimited
Session	74,257	14,926	242	890	8,057	780
Views	59,746	12,478	185	746	6,637	656

# Usage Analysis

## Usage Analysis



- Usage of Ebrary is determined by the method of learning of an institution, which includes concept and policy of the Library.
- Ebrary Electronic Books seldom has downtime besides their database maintenance (once in every 2 months)
- Larger Collections = Greater Usage (OUM, UUM, UM)



# Problem Analysis

## Problem Analysis

Accessibility	Very Few
Response Time	Fast
Maintenance Downtime	Early Notification Given and Downtime is short
Complaints from users	Almost None
Service Response time	Fast
Activation of access	Fast
Usage statistic and reporting	Self Generate and Fast
Quotation and invoicing matters	Fast (Usually 3 months before expiry date)

# Problem Analysis

## Problem Analysis



- Ebrary requires special plug-in called Ebrary Reader
  - Windows (IE only for Mac)
  - Mac
- Some users have difficulties understanding this req.
- Users with Linux will have to use WINE

# License Agreement

## License Agreement



- Contracts are based upon pricing plan and subscriptions durations
- 4% - 5% of increments are subject to costing or title additions
- Renewals are yearly basis

# Study Analysis

## Study Analysis



- Ebrary seldom causes any problems to subscribing library
- Problems usually arise among users who
  - Do not understand the req.
  - Confuse with the authentication system
  - Often thinks the “sign-in” feature as authentication system

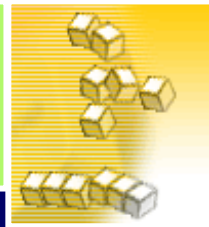
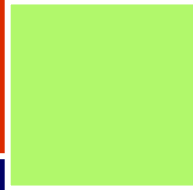
# Points to ponder

## Points to ponder



- Training on “How to use Ebrary”
- Ebrary should move away from plug-ins and adopt java-based system as told to provide cross-platform compatibility
- Create Ebrary User Group

*Thank You . . . .*



*And Good Day !!*